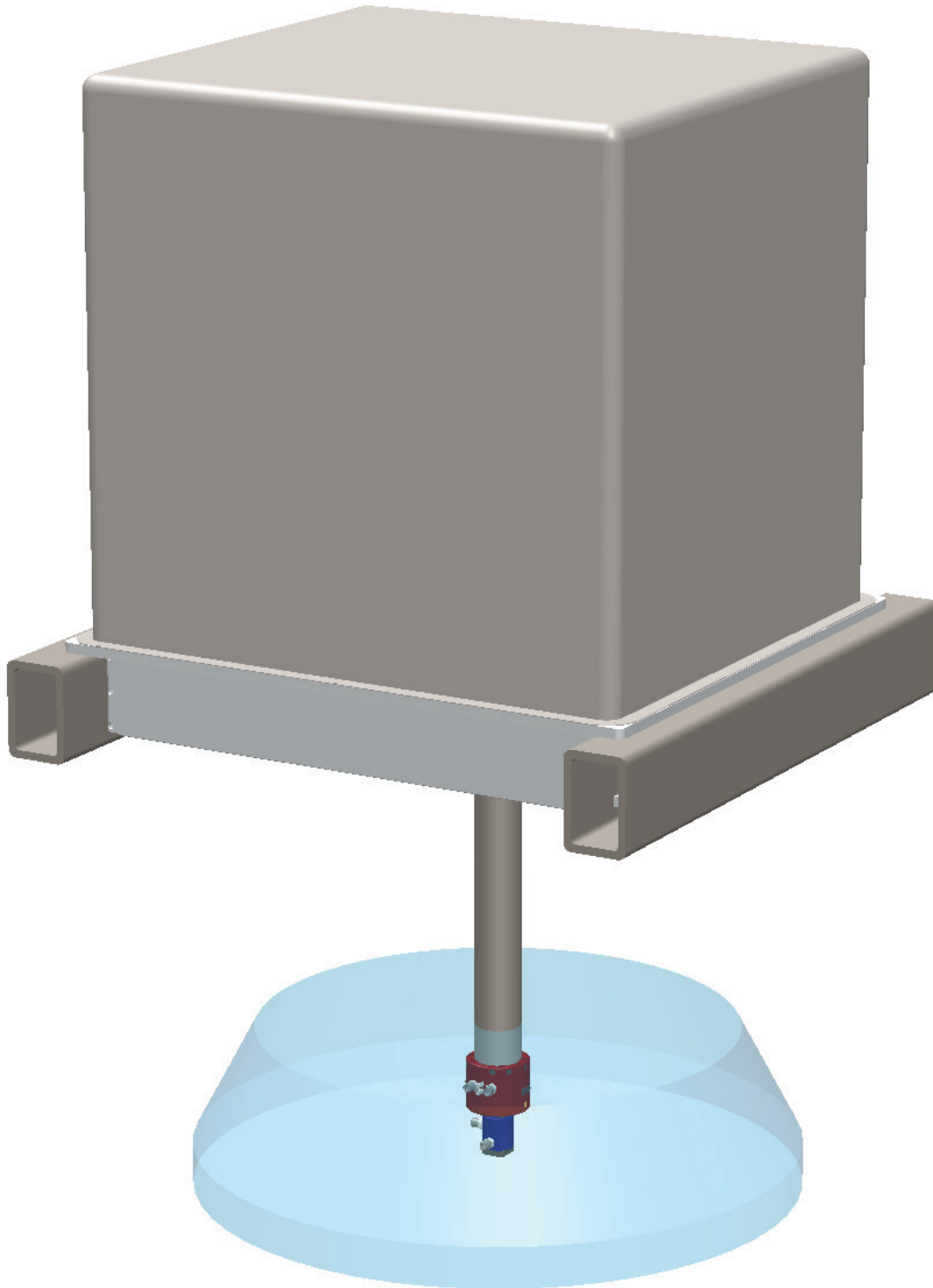




R-150 ROBOT MODULE

The latest advancement in automated packaging technology



R-150 ROBOT MODULE

IASE is proud to introduce its latest advancement in automated packaging technology: the R-150 Michelangelo.

The first of its kind on the market, the R-150 is an articulated boom robot with a broad range of motion and complete product rotation, providing IASE customers with competitive performance and durability within a more economic workspace.

In contrast to the common delta robot, the Michelangelo's innovative and robust central boom design provides for a minimally obstructed workspace while shielding its internal components. With isolated driving machinery and its unique levered mechanism, the R-150 can complete from 60 to 120 picks per minute (depending on product) moving at speeds of up to 17 feet per second.

Selected Features

- » Accuracy and repeatability to within .03125" (.8 mm)
- » 38" Diameter by 12" vertical movement envelope
- » 12.3 G acceleration
- » Top speed of 204 in/sec.
- » Maximum load capacity of 25 lbs.
- » 60 to 120 PPM depending on product

Power and Precision

Capable of lifting up to 25 lbs., this single boom design can reach nearly 40" in a 360° range. A high precision wrist joint maintains vertical pick and place operation even at the edges of the work envelope.

The R-150 can sync with multiple belts as well as IASE's Wireless Intelligent Positioning Transport Module (WIPTM). With customized end effectors, products of various shapes and sizes are fully supported by this versatile robot.

